

▼ Shown from left to right: A-220, A-330 and A-258



Arbor Press

- Foot mounting holes for horizontal or vertical positioning
- Machined work surfaces for easier fixturing
- Slotted back to simplify loading and unloading of longer parts

C-Clamp Press

- 5, 10 and 20 ton capacity
- Operational in all positions

Bench Frame Press

- Cylinder mounting adaptor allows lateral positioning along rails
- Mounting holes for easy mounting to fixed surface

The Standard In Workshop Tools



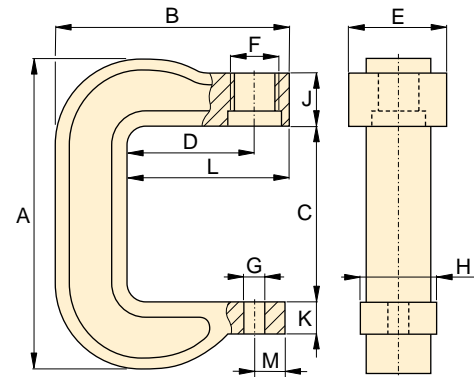
Push Pin A-183

For applications requiring precision pressing, such as shaft removal and insertion. This attachment fits 10 ton cylinders and requires the use of a threaded adaptor saddle (A-13).



Smooth Saddle A-185

For pressing applications of delicate parts, such as aluminum castings, this saddle decreases surface marks during the pressing application. Requires 10 ton cylinder and threaded adaptor saddle (A-13).



C-Clamp Press A-205, A-210, A-220

Press Type	Press Capacity (tons)	Maximum Vertical Daylight (in)	Maximum Bed Width (in)	Cylinder Model Number*	Press Model Number	Weight (lbs)	Pump Model Number (- must be ordered separately)			Page:
							Manual	Electric	Air	
Arbor	10	8.94	5.31	-	A-310	60	-	-	-	-
	30	10.25	7.00	-	A-330	190	-	-	-	-
C-Clamp	5	6.50	2.00	-	A-205	14	-	-	-	-
	10	9.00	3.25	-	A-210	38	-	-	-	-
	20	11.88	3.75	**	A-220	85	-	-	-	-
Bench	10	15.38	15.00	-	A-258	105	-	-	-	-
		15.38	15.00	RC-1010	IPA-1022	129	-	-	PA-133	92
		15.38	15.00	RC-1010	IPH-1040	134	P-392	-	-	58

* For cylinder specifications see the cylinder section on page 7.

** Requires RC-25 ton cylinder, limited to 20 tons.

Arbor, C-Clamp and Bench Frame Presses

▼ A perfect example of the force and versatility of the Enerpac A-220 C-Clamp press.



A IP Series

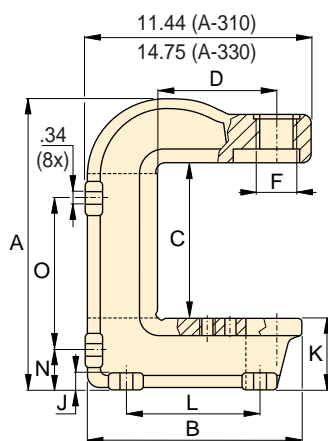
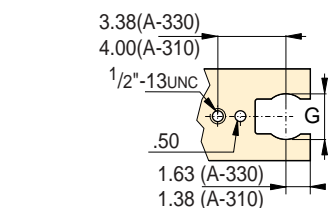


Capacity:
5-30 tons

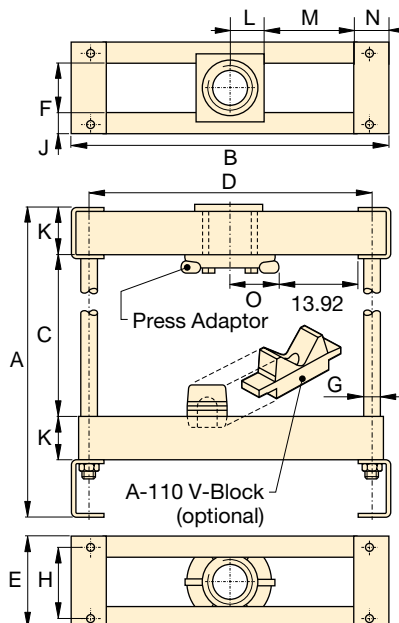
Maximum Daylight & Width:
15.38 & 15.00 inch

Mounting Capabilities:
Fixed or Portable

Maximum Operating Pressure:
10,000 psi



Arbor Press A-310, A-330



Bench Press Frame A-258



For high-cycle production applications, C-Clamp and Arbor presses should be limited in their capacity. Consult Enerpac Technical Services for specific application details.



Enerpac cylinders and power sources for C-Clamp and Arbor presses must be ordered separately.

Press Dimensions (in)														Press Model Number
A	B	C	D	E	F	G	H	J	K	L	M	N	O	
16.31	11.06	8.94	6.00	5.31	2 ¹ / ₄ -14 UN	2.50	4.81	.75	3.81	6.88	2.56	2.13	8.63	A-310
21.94	13.88	10.25	6.00	7.00	3 ⁵ / ₁₆ -12 UN	2.50	5.50	1.00	6.50	8.00	2.63	3.88	10.88	A-330
11.44	8.00	6.50	3.75	2.88	1 ¹ / ₂ -16 UN	1.02	2.00	2.50	1.06	3.75	1.00	-	-	A-205
16.00	11.13	9.00	6.00	3.25	2 ¹ / ₄ -14 UN	1.02	2.25	2.50	1.69	6.00	1.13	-	-	A-210
21.25	13.63	11.88	6.00	4.76	3 ⁵ / ₁₆ -12 UN	1.02	2.75	2.75	1.88	8.38	1.13	-	-	A-220
25.63	18.75	16.50	16.00	5.75	3.25	1.00	4.50	1.25	2.75	1.88	5.30	2.20	2.63	A-258
25.63	18.75	16.50	16.00	5.75	3.25	1.00	4.50	1.25	2.75	1.88	5.30	2.20	2.63	IPA-1022
25.63	18.75	16.50	16.00	5.75	3.25	1.00	4.50	1.25	2.75	1.88	5.30	2.20	2.63	IPH-1040